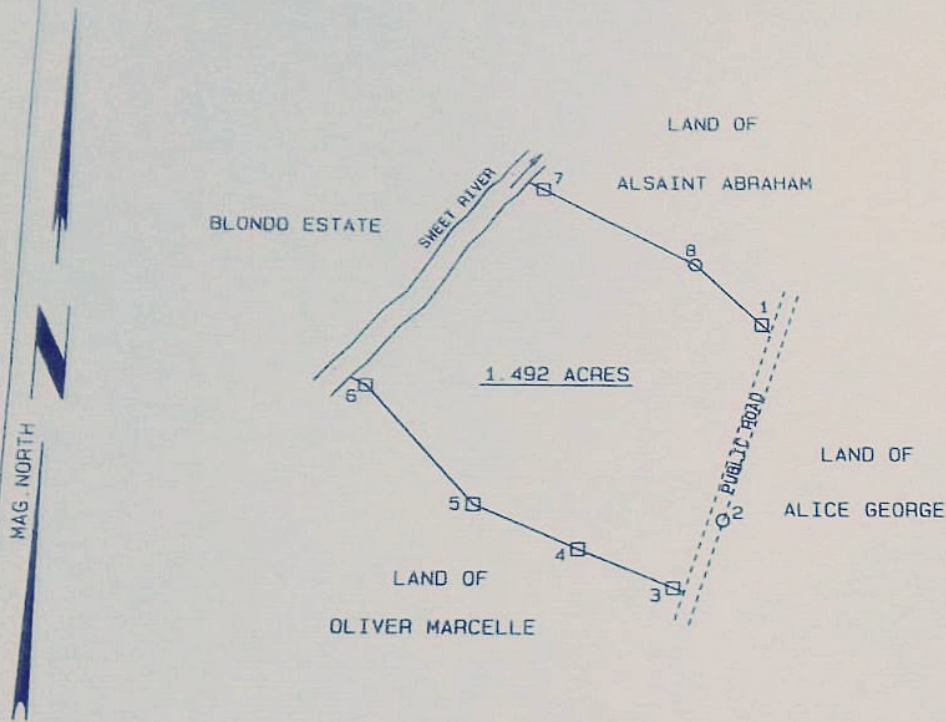


PLAN OF A PORTION OF LAND AT CALIBISHIE
 IN THE PARISH OF ST. ANDREW CONTAINING 1.492 ACRES
 COPIED FOR: FRANCIS AUGUSTINE

COMMONWEALTH OF DOMINICA

LEGEND

- CONCRETE PILLAR
- BOTTLE



TRAVERSE			
FR	TO	BEARING	DIST
1	2	190°56'00"	165.60
2	3	215°04'00"	67.00
3	4	292°52'00"	80.00
4	5	293°40'00"	89.70
5	6	318°19'00"	130.50
6	7	39°20'00"	217.10
7	8	117°40'00"	138.20
8	1	125°26'00"	84.10

BOUNDARIES

NORTH-EAST: BY LAND OF ALSAÏNT ABRAHAM
 NORTH-WEST: BY SWEET RIVER SEPARATING IT FROM BLONDO ESTATE
 SOUTH-EAST: BY PUBLIC ROAD SEPARATING IT FROM LAND OF ALICE GEORGE
 SOUTH-WEST: BY LAND OF OLIVER MARCELLE

COPIED FROM PLAN ATTACHED TO CERTIFICATE
 OF TITLE BOOK Y18 FOLIO 63

BY

SURVEYED AND DRAWN BY

ALPHONSE PASCAL

JAMES GREGOIRE
 17/05/2021

7/03/1994
 LICENSED SURVEYOR

LICENSED SURVEYOR
 SCALE: 2 CHAINS TO 1 INCH